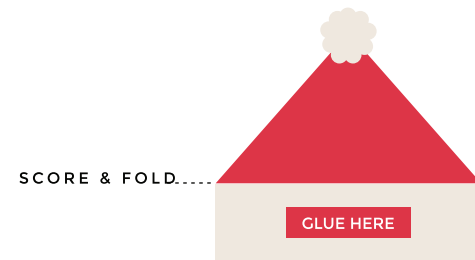
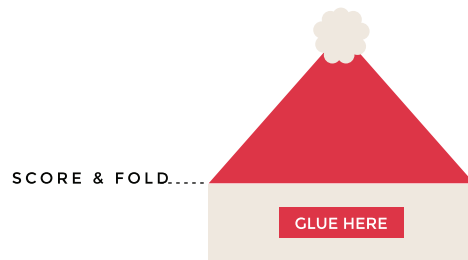
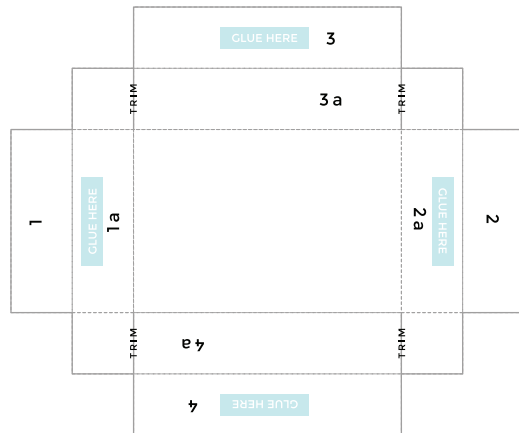
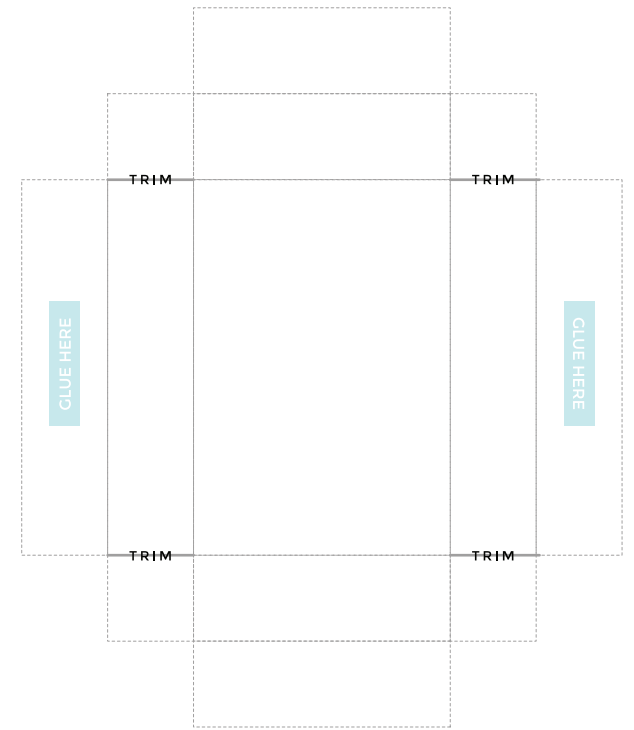
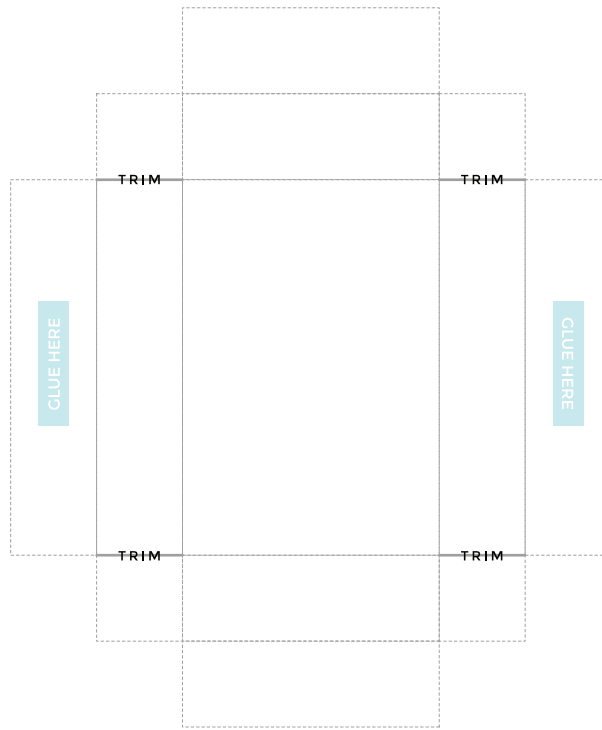
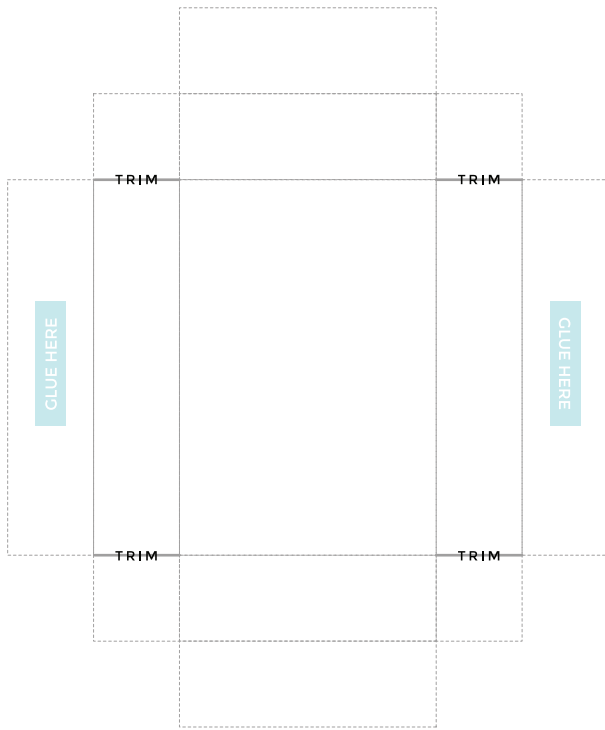


PRINTABLE

SANTA MATCHBOX FAVOR

FREE PRINTABLE BY DESIGN IS YAY FOR HOORAY





HOW TO MAKE THE INNER MATCHBOX:

1. TRIM THE SOLID LINES
2. SCORE THE DOTTED LINES AND FOLD
3. STICK 1 to 1a & 2 to 2a
4. STICK 3 to 3a & 4 to 4a, WITH THE LITTLE SQUARE BIT IN BETWEEN
5. FILL WITH SWEETS OR LITTLE GIFTS, AND INSERT INTO THE OUTER PART